

HIGHLIGHTS OF PRESCRIBING INFORMATION

These highlights do not include all the information needed to use VEKLURY safely and effectively. See full prescribing information for VEKLURY.

VEKLURY® (remdesivir) for injection, for intravenous use
VEKLURY® (remdesivir) injection, for intravenous use
Initial U.S. Approval: 2020

INDICATIONS AND USAGE

VEKLURY is a SARS-CoV-2 nucleotide analog RNA polymerase inhibitor indicated for adults and pediatric patients (12 years of age and older and weighing at least 40 kg) for the treatment of coronavirus disease 2019 (COVID-19) requiring hospitalization. VEKLURY should only be administered in a hospital or in a healthcare setting capable of providing acute care comparable to inpatient hospital care. (1)

DOSAGE AND ADMINISTRATION

- Testing: In all patients, before initiating VEKLURY and during treatment as clinically appropriate, perform renal and hepatic laboratory testing and assess prothrombin time. (2.1)
- Recommended dosage in adults and pediatric patients 12 years of age and older and weighing at least 40 kg: a single loading dose of VEKLURY 200 mg on Day 1 followed by once-daily maintenance doses of VEKLURY 100 mg from Day 2 infused over 30 to 120 minutes. (2.2)
- For patients not requiring invasive mechanical ventilation and/or ECMO, the recommended total treatment duration is 5 days. If a patient does not demonstrate clinical improvement, treatment may be extended for up to 5 additional days for a total treatment duration of up to 10 days. (2.2)
- For patients requiring invasive mechanical ventilation and/or ECMO, the recommended total treatment duration is 10 days. (2.2)
- Administer VEKLURY via intravenous (IV) infusion over 30 to 120 minutes. (2.2, 2.4)
- Renal impairment: VEKLURY is not recommended in patients with eGFR less than 30 mL/min. (2.3)
- Dose preparation and administration: Refer to the full prescribing information for further details for both formulations. (2.4)
- Storage of prepared dosages: VEKLURY contains no preservative. (2.5)

DOSAGE FORMS AND STRENGTHS

- For injection: 100 mg of remdesivir as a lyophilized powder, in a single-dose vial. (3)
- Injection: 100 mg/20 mL (5 mg/mL) remdesivir, in a single-dose vial. (3)

FULL PRESCRIBING INFORMATION: CONTENTS*

1 INDICATIONS AND USAGE

2 DOSAGE AND ADMINISTRATION

- 2.1 Testing Before Initiating and During Treatment with VEKLURY
- 2.2 Recommended Dosage in Adults and Pediatric Patients 12 Years of Age and Older and Weighing at Least 40 kg
- 2.3 Renal Impairment
- 2.4 Dose Preparation and Administration
- 2.5 Storage of Prepared Dosages

3 DOSAGE FORMS AND STRENGTHS

4 CONTRAINDICATIONS

5 WARNINGS AND PRECAUTIONS

- 5.1 Hypersensitivity Including Infusion-related and Anaphylactic Reactions
- 5.2 Increased Risk of Transaminase Elevations
- 5.3 Risk of Reduced Antiviral Activity When Coadministered with Chloroquine Phosphate or Hydroxychloroquine Sulfate

6 ADVERSE REACTIONS

- 6.1 Clinical Trials Experience

7 DRUG INTERACTIONS

8 USE IN SPECIFIC POPULATIONS

CONTRAINDICATIONS

VEKLURY is contraindicated in patients with a history of clinically significant hypersensitivity reactions to VEKLURY or any components of the product. (4)

WARNINGS AND PRECAUTIONS

- Hypersensitivity including infusion-related and anaphylactic reactions: Hypersensitivity reactions have been observed during and following administration of VEKLURY. Slower infusion rates, with a maximum infusion time of up to 120 minutes, can be considered to potentially prevent signs and symptoms of hypersensitivity. If signs and symptoms of a clinically significant hypersensitivity reaction occur, immediately discontinue administration of VEKLURY and initiate appropriate treatment. (5.1)
- Increased risk of transaminase elevations: Transaminase elevations have been observed in healthy volunteers and have also been reported in patients with COVID-19 who received VEKLURY. Perform hepatic laboratory testing in all patients before starting VEKLURY and while receiving VEKLURY as clinically appropriate. Consider discontinuing VEKLURY if ALT levels increase to greater than 10 times the upper limit of normal. Discontinue VEKLURY if ALT elevation is accompanied by signs or symptoms of liver inflammation. (5.2)
- Risk of reduced antiviral activity when coadministered with chloroquine phosphate or hydroxychloroquine sulfate: Coadministration of VEKLURY and chloroquine phosphate or hydroxychloroquine sulfate is not recommended based on data from cell culture experiments demonstrating a potential antagonistic effect of chloroquine on the intracellular metabolic activation and antiviral activity of VEKLURY. (5.3)

ADVERSE REACTIONS

The most common adverse reactions (incidence greater than or equal to 5%, all grades) observed with treatment with VEKLURY are nausea, ALT increased, and AST increased. (6.1)

To report SUSPECTED ADVERSE REACTIONS, contact Gilead Sciences, Inc. at 1-800-GILEAD-5 or FDA at 1-800-FDA-1088 or www.fda.gov/medwatch.

See 17 for PATIENT COUNSELING INFORMATION and FDA-approved patient labeling.

Revised: 02/2021

- 8.1 Pregnancy
- 8.2 Lactation
- 8.4 Pediatric Use
- 8.5 Geriatric Use
- 8.6 Renal Impairment
- 8.7 Hepatic Impairment

10 OVERDOSAGE

11 DESCRIPTION

12 CLINICAL PHARMACOLOGY

- 12.1 Mechanism of Action
- 12.2 Pharmacodynamics
- 12.3 Pharmacokinetics
- 12.4 Microbiology

13 NONCLINICAL TOXICOLOGY

- 13.1 Carcinogenesis, Mutagenesis, Impairment of Fertility
- 13.2 Animal Toxicology and/or Pharmacology

14 CLINICAL STUDIES

16 HOW SUPPLIED/STORAGE AND HANDLING

17 PATIENT COUNSELING INFORMATION

* Sections or subsections omitted from the full prescribing information are not listed.

FULL PRESCRIBING INFORMATION

1 INDICATIONS AND USAGE

VEKLURY is indicated for adults and pediatric patients (12 years of age and older and weighing at least 40 kg) for the treatment of coronavirus disease 2019 (COVID-19) requiring hospitalization. VEKLURY should only be administered in a hospital or in a healthcare setting capable of providing acute care comparable to inpatient hospital care [see *Clinical Studies (14)*].

2 DOSAGE AND ADMINISTRATION

2.1 Testing Before Initiating and During Treatment with VEKLURY

Determine eGFR in all patients before starting VEKLURY and monitor while receiving VEKLURY as clinically appropriate [see *Dosage and Administration (2.3)* and *Use in Specific Populations (8.4, 8.6)*].

Perform hepatic laboratory testing in all patients before starting VEKLURY and while receiving VEKLURY as clinically appropriate [see *Warnings and Precautions (5.2)* and *Use in Specific Populations (8.7)*].

Determine prothrombin time in all patients before starting VEKLURY and monitor while receiving VEKLURY as clinically appropriate [see *Adverse Reactions (6.1)*].

2.2 Recommended Dosage in Adults and Pediatric Patients 12 Years of Age and Older and Weighing at Least 40 kg

The recommended dosage for adults and pediatric patients 12 years of age and older and weighing at least 40 kg is a single loading dose of VEKLURY 200 mg on Day 1 via intravenous infusion followed by once-daily maintenance doses of VEKLURY 100 mg from Day 2 via intravenous infusion.

- The recommended treatment duration for patients not requiring invasive mechanical ventilation and/or extracorporeal membrane oxygenation (ECMO) is 5 days. If a patient does not demonstrate clinical improvement, treatment may be extended for up to 5 additional days for a total treatment duration of up to 10 days.
- The recommended total treatment duration for patients requiring invasive mechanical ventilation and/or ECMO is 10 days.
- VEKLURY must be diluted prior to intravenous infusion. Refer to Dosage and Administration (2.4) for detailed preparation and administration instructions.

2.3 Renal Impairment

VEKLURY is not recommended in patients with eGFR less than 30 mL per minute [see *Dosage and Administration (2.1)* and *Use in Specific Populations (8.6)*].

2.4 Dose Preparation and Administration

- VEKLURY must be prepared and administered under the supervision of a healthcare provider.
- VEKLURY must be administered via intravenous infusion only. Do not administer by any other route.
- VEKLURY is available in two dosage forms:
 - VEKLURY for injection (supplied as 100 mg lyophilized powder in vial) needs to be reconstituted with Sterile Water for Injection prior to diluting in a 100 mL or 250 mL 0.9% sodium chloride infusion bag.
 - VEKLURY injection (supplied as 100 mg/20 mL [5 mg/mL] solution in vial) must be diluted in a 250 mL 0.9% sodium chloride infusion bag.
- Parenteral drug products should be inspected visually for particulate matter and discoloration prior to administration. Discard the vial if the lyophilized powder or solution is discolored or contains particulate matter. Prior to dilution in a 0.9% sodium chloride infusion bag, reconstituted VEKLURY for injection and VEKLURY injection solution should be a clear, colorless to yellow solution, free of visible particles.
- Prepare diluted solution under aseptic conditions and on same day as administration.

VEKLURY for Injection (Supplied as 100 mg Lyophilized Powder in Vial)

Reconstitution Instructions

Remove the required number of single-dose vial(s) from storage. For each vial:

- Aseptically reconstitute VEKLURY lyophilized powder by adding 19 mL of Sterile Water for Injection using a suitably sized syringe and needle per vial.
- Only use Sterile Water for Injection to reconstitute VEKLURY lyophilized powder.
- Discard the vial if a vacuum does not pull the Sterile Water for Injection into the vial.
- Immediately shake the vial for 30 seconds.
- Allow the contents of the vial to settle for 2 to 3 minutes. A clear solution should result.
- If the contents of the vial are not completely dissolved, shake the vial again for 30 seconds and allow the contents to settle for 2 to 3 minutes. Repeat this procedure as necessary until the contents of the vial are completely dissolved. Discard the vial if the contents are not completely dissolved.
- Following reconstitution, each vial contains 100 mg/20 mL (5 mg/mL) of remdesivir solution.
- Use reconstituted product immediately to prepare the diluted drug product [*see Dosage and Administration (2.5)*].

Dilution Instructions

Care should be taken during admixture to prevent inadvertent microbial contamination. As there is no preservative or bacteriostatic agent present in this product, aseptic technique must be used in preparation of the final parenteral solution. It is always recommended to administer intravenous medication immediately after preparation when possible.

- Reconstituted VEKLURY for injection, containing 100 mg/20 mL remdesivir solution, must be further diluted in either a 100 mL or 250 mL 0.9% sodium chloride infusion bag. Refer to Table 1 for instructions.

Table 1 Recommended Dilution Instructions—Reconstituted VEKLURY for Injection Lyophilized Powder

VEKLURY dose	0.9% sodium chloride infusion bag volume to be used	Volume to be withdrawn and discarded from 0.9% sodium chloride infusion bag	Required volume of reconstituted VEKLURY for injection
Loading dose 200 mg (2 vials)	250 mL	40 mL	40 mL (2 × 20 mL)
	100 mL	40 mL	40 mL (2 × 20 mL)
Maintenance dose 100 mg (1 vial)	250 mL	20 mL	20 mL
	100 mL	20 mL	20 mL

- Withdraw and discard the required volume of 0.9% sodium chloride from the bag following instructions in Table 1, using an appropriately sized syringe and needle.
- Withdraw the required volume of reconstituted VEKLURY for injection from the VEKLURY vial following instructions in Table 1, using an appropriately sized syringe. Discard any unused portion remaining in the reconstituted vial.
- Transfer the required volume of reconstituted VEKLURY for injection to the selected infusion bag.
- Gently invert the bag 20 times to mix the solution in the bag. Do not shake.
- The prepared infusion solution is stable for 24 hours at room temperature (20°C to 25°C [68°F to 77°F]) or 48 hours at refrigerated temperature (2°C to 8°C [36°F to 46°F]).

Administration Instructions

Do not administer the prepared diluted solution simultaneously with any other medication. The compatibility of VEKLURY injection with intravenous solutions and medications other than 0.9% sodium chloride injection, USP is not known. Administer VEKLURY via intravenous infusion over 30 to 120 minutes.

Administer the diluted solution with the infusion rate described in Table 2.

Table 2 Recommended Rate of Infusion—Diluted VEKLURY for Injection Lyophilized Powder in Adults and Pediatric Patients 12 Years of Age and Older and Weighing at Least 40 kg

Infusion bag volume	Infusion time	Rate of infusion
250 mL	30 min	8.33 mL/min
	60 min	4.17 mL/min
	120 min	2.08 mL/min
100 mL	30 min	3.33 mL/min
	60 min	1.67 mL/min
	120 min	0.83 mL/min

VEKLURY Injection (Supplied as 100 mg/20 mL [5 mg/mL] Solution in Vial)

Dilution Instructions

Care should be taken during admixture to prevent inadvertent microbial contamination. As there is no preservative or bacteriostatic agent present in this product, aseptic technique must be used in preparation of the final parenteral solution. It is always recommended to administer intravenous medication immediately after preparation when possible.

- Remove the required number of single-dose vial(s) from storage. Each vial contains 100 mg/20 mL of remdesivir. For each vial:
 - Equilibrate to room temperature (20°C to 25°C [68°F to 77°F]). Sealed vials can be stored up to 12 hours at room temperature prior to dilution.
 - Inspect the vial to ensure the container closure is free from defects and the solution is free of particulate matter.
 - VEKLURY injection must be diluted in an infusion bag containing 250 mL of 0.9% sodium chloride only. Refer to Table 3 for instructions.

Table 3 Recommended Dilution Instructions—VEKLURY Injection (Supplied as Solution in Vial)

VEKLURY dose	0.9% sodium chloride infusion bag volume to be used	Volume to be withdrawn and discarded from 0.9% sodium chloride infusion bag	Required volume of VEKLURY injection
Loading dose 200 mg (2 vials)	250 mL	40 mL	40 mL (2 × 20 mL)
Maintenance dose 100 mg (1 vial)		20 mL	20 mL

- Withdraw and discard the required volume of 0.9% sodium chloride from the bag following instructions in Table 3, using an appropriately sized syringe and needle.
- Withdraw the required volume of VEKLURY injection from the VEKLURY vial following instructions in Table 3, using an appropriately sized syringe.
 - Pull the syringe plunger rod back to fill the syringe with approximately 10 mL of air.
 - Inject the air into the VEKLURY injection vial above the level of the solution.
 - Invert the vial and withdraw the required volume of VEKLURY injection solution into the syringe. The last 5 mL of solution requires more force to withdraw.
- Transfer the required volume of VEKLURY injection to the infusion bag.
- Gently invert the bag 20 times to mix the solution in the bag. Do not shake.
- The prepared infusion solution is stable for 24 hours at room temperature (20°C to 25°C [68°F to 77°F]) or 48 hours at refrigerated temperature (2°C to 8°C [36°F to 46°F]).

Administration Instructions

Do not administer the prepared diluted solution simultaneously with any other medication. The compatibility of VEKLURY injection with intravenous solutions and medications other than 0.9% sodium chloride injection, USP is not known. Administer VEKLURY via intravenous infusion over 30 to 120 minutes.

Administer the diluted solution with the infusion rate described in Table 4.

Table 4 Recommended Rate of Infusion—Diluted VEKLURY Injection Solution in Adults and Pediatric Patients 12 Years of Age and Older and Weighing at Least 40 kg

Infusion bag volume	Infusion time	Rate of infusion
250 mL	30 min	8.33 mL/min
	60 min	4.17 mL/min
	120 min	2.08 mL/min

2.5 Storage of Prepared Dosages

VEKLURY for Injection (Supplied as Lyophilized Powder in Vial)

After reconstitution, use vials immediately to prepare diluted solution. The diluted VEKLURY solution in the infusion bags can be stored up to 24 hours at room temperature (20°C to 25°C [68°F to 77°F]) prior to administration or 48 hours at refrigerated temperature (2°C to 8°C [36°F to 46°F]).

VEKLURY Injection (Supplied as Solution in Vial)

Store VEKLURY injection after dilution in the infusion bags up to 24 hours at room temperature (20°C to 25°C [68°F to 77°F]) or 48 hours at refrigerated temperature (2°C to 8°C [36°F to 46°F]).

IMPORTANT:

This product contains no preservative. Any unused portion of a single-dose VEKLURY vial should be discarded after a diluted solution is prepared.

3 DOSAGE FORMS AND STRENGTHS

- VEKLURY for injection, 100 mg, available as a sterile, preservative-free white to off-white to yellow lyophilized powder in single-dose vial for reconstitution.
- VEKLURY injection, 100 mg/20 mL (5 mg/mL), available as a clear, colorless to yellow solution, free of visible particles in single-dose vial.

4 CONTRAINDICATIONS

VEKLURY is contraindicated in patients with a history of clinically significant hypersensitivity reactions to VEKLURY or any components of the product [see *Warnings and Precautions (5.1)*].

5 WARNINGS AND PRECAUTIONS

5.1 Hypersensitivity Including Infusion-related and Anaphylactic Reactions

Hypersensitivity reactions, including infusion-related and anaphylactic reactions, have been observed during and following administration of VEKLURY. Signs and symptoms may include hypotension, hypertension, tachycardia, bradycardia, hypoxia, fever, dyspnea, wheezing, angioedema, rash, nausea, diaphoresis, and shivering. Slower infusion rates, with a maximum infusion time of up to 120 minutes, can be considered to potentially prevent these signs and symptoms. Monitor patients under close medical supervision for hypersensitivity reactions during and following administration of VEKLURY. If signs and symptoms of a clinically significant hypersensitivity reaction occur, immediately discontinue administration of VEKLURY and initiate appropriate treatment. The use of VEKLURY is contraindicated in patients with known hypersensitivity to VEKLURY or any components of the product [see *Contraindications (4)*].

5.2 Increased Risk of Transaminase Elevations

Transaminase elevations have been observed in healthy volunteers who received 200 mg of VEKLURY followed by 100 mg doses for up to 10 days; the transaminase elevations were mild (Grade 1) to moderate (Grade 2) in severity and resolved upon discontinuation of VEKLURY. Transaminase elevations have also been reported in patients with COVID-19 who received VEKLURY [see *Adverse Reactions (6.1)*]. Because transaminase elevations have been reported as a clinical feature of COVID-19, and the incidence was similar in patients receiving placebo versus VEKLURY in clinical trials of VEKLURY, discerning the contribution of VEKLURY to transaminase elevations in patients with COVID-19 can be challenging.

Perform hepatic laboratory testing in all patients before starting VEKLURY and while receiving VEKLURY as clinically appropriate [see *Dosage and Administration (2.1)* and *Use in Specific Populations (8.7)*].

- Consider discontinuing VEKLURY if ALT levels increase to greater than 10 times the upper limit of normal.
- Discontinue VEKLURY if ALT elevation is accompanied by signs or symptoms of liver inflammation.

5.3 Risk of Reduced Antiviral Activity When Coadministered with Chloroquine Phosphate or Hydroxychloroquine Sulfate

Coadministration of VEKLURY and chloroquine phosphate or hydroxychloroquine sulfate is not recommended based on data from cell culture experiments demonstrating a potential antagonistic effect of chloroquine on the intracellular metabolic activation and antiviral activity of VEKLURY [see *Drug Interactions (7)* and *Microbiology (12.4)*].

6 ADVERSE REACTIONS

The following adverse reactions are discussed in other sections of the labeling:

- Hypersensitivity Including Infusion-related and Anaphylactic Reactions [see Warnings and Precautions (5.1)]
- Increased Risk of Transaminase Elevations [see Warnings and Precautions (5.2)]

6.1 Clinical Trials Experience

Because clinical trials are conducted under widely varying conditions, adverse reaction rates observed in the clinical trials of a drug cannot be directly compared to rates in the clinical trials of another drug and may not reflect the rates observed in practice.

The safety of VEKLURY is based on data from three Phase 3 studies in 1,313 hospitalized adult subjects with COVID-19, from four Phase 1 studies in 131 healthy adults, and from patients with COVID-19 who received VEKLURY under the Emergency Use Authorization or in a compassionate use program.

Clinical Trials Experience in Subjects with COVID-19

NIAID ACTT-1 was a randomized, double-blind, placebo-controlled clinical trial in hospitalized subjects with mild, moderate, and severe COVID-19 treated with VEKLURY (n=532) or placebo (n=516) for up to 10 days. Subjects treated with VEKLURY received 200 mg on Day 1 and 100 mg once daily on subsequent days [see Clinical Studies (14)]. The collection of adverse event data in this trial was limited to severe (Grade 3) or potentially life-threatening (Grade 4) adverse events, serious adverse events, adverse events leading to study drug discontinuation, and moderate (Grade 2) severity or higher hypersensitivity reactions. Rates of adverse reactions (\geq Grade 3), serious adverse reactions, and adverse reactions leading to treatment discontinuation are presented in Table 5.

Table 5 Summary of Adverse Reaction Rates in Subjects with Mild, Moderate, or Severe COVID-19 in NIAID ACTT-1

Types of Adverse Reactions	VEKLURY N=532 n (%)	Placebo N=516 n (%)
Adverse reactions, Grades ≥ 3	41 (8%)	46 (9%)
Serious adverse reactions	2 (0.4%) ^a	3 (0.6%)
Adverse reactions leading to treatment discontinuation	11 (2%) ^b	15 (3%)

a. Seizure (n=1), infusion-related reaction (n=1).

b. Seizure (n=1), infusion-related reaction (n=1), transaminases increased (n=3), ALT increased and AST increased (n=1), GFR decreased (n=2), acute kidney injury (n=3).

Study GS-US-540-5773 was a randomized, open-label clinical trial in hospitalized subjects with severe COVID-19 treated with VEKLURY 200 mg on Day 1 and 100 mg once daily for 5 (n=200) or 10 days (n=197). Adverse reactions were reported in 33 (17%) subjects in the 5-day group and 40 (20%) subjects in the 10-day group [see Clinical Studies (14)]. The most common adverse reactions occurring in at least 5% of subjects in either the VEKLURY 5-day or 10-day group, respectively, were nausea (5% vs 3%), AST increased (3% vs 6%), and ALT increased (2% vs 7%). Rates of any

adverse reactions, serious adverse reactions, and adverse reactions leading to treatment discontinuation are presented in Table 6.

Table 6 Summary of Adverse Reaction Rates in Subjects with Severe COVID-19 in Study 5773

Types of Adverse Reactions	VEKLURY 5 Days N=200 n (%)	VEKLURY 10 Days N=197 n (%)
Any adverse reaction, all Grades	33 (17%)	40 (20%)
Serious adverse reactions	3 (2%) ^a	4 (2%) ^a
Adverse reactions leading to treatment discontinuation	5 (3%) ^b	9 (5%) ^b

a. Transaminases increased (n=5), hepatic enzyme increased (n=1), hypertransaminasaemia (n=1).

b. Transaminases increased (n=4), hepatic enzyme increased (n=2), LFT increased (n=2), hypertransaminasaemia (n=1), ALT increased (n=1), ALT increased and AST increased (n=2), injection site erythema (n=1), rash (n=1).

Study GS-US-540-5774 was a randomized, open-label clinical trial in hospitalized subjects with moderate COVID-19 treated with VEKLURY 200 mg on Day 1 and 100 mg daily for 5 (n=191) or 10 days (n=193), or standard of care (SOC) only (n=200) [see *Clinical Studies (14)*]. Adverse reactions were reported in 36 (19%) subjects in the 5-day group and 25 (13%) subjects in the 10-day group. The most common adverse reaction occurring in at least 5% of subjects in the VEKLURY groups was nausea (7% in the 5-day group, 4% in the 10-day group). Rates of any adverse reactions, serious adverse reactions, and adverse reactions leading to treatment discontinuation are presented in Table 7.

Table 7 Summary of Adverse Reaction^a Rates in Subjects with Moderate COVID-19 in Study 5774

Types of Adverse Reactions	VEKLURY 5 Days N=191 n (%)	VEKLURY 10 Days N=193 n (%)
Any adverse reaction, all Grades	36 (19%)	25 (13%)
Serious adverse reactions	1 (<1%) ^b	0
Adverse reactions leading to treatment discontinuation	4 (2%) ^c	4 (2%) ^c

a. Attribution of events to study drug was not performed for the SOC group.

b. Heart rate decreased.

c. ALT increased (n=2), ALT increased and AST increased (n=1), hypertransaminasaemia (n=1), blood alkaline phosphatase increased (n=1), rash (n=2), heart rate decreased (n=1).

Less Common Adverse Reactions

Clinically significant adverse reactions that were reported in <2% of subjects exposed to VEKLURY in clinical trials are listed below:

- Hypersensitivity reactions [see Warnings and Precautions (5.1)].
- Generalized seizure
- Rash

Emergency Use Authorization Experience in Patients with COVID-19

The following adverse reactions have been identified during use of VEKLURY under Emergency Use Authorization:

- General disorders and administration site conditions: Administration site extravasation
- Skin and subcutaneous tissue disorders: Rash
- Immune system disorders: Anaphylaxis, angioedema, infusion-related reactions, hypersensitivity
- Investigations: Transaminase elevations

Laboratory Abnormalities

Study GS-US-399-5505 was a Phase 1, randomized, blinded, placebo-controlled clinical trial in healthy volunteers administered VEKLURY 200 mg on Day 1 and 100 mg for either 4 days or 9 days. Mild (Grade 1, n=8) to moderate (Grade 2, n=1) elevations in ALT were observed in 9 of 20 subjects receiving 10 days of VEKLURY; the elevations in ALT resolved upon discontinuation of VEKLURY. No subjects (0 of 9) who received 5 days of VEKLURY had graded increases in ALT.

The frequencies of laboratory abnormalities (Grades 3-4) occurring in at least 3% of subjects with COVID-19 receiving VEKLURY in Trials NIAID ACTT-1, 5773, and 5774 are presented in Table 8, Table 9, and Table 10, respectively.

Table 8 Laboratory Abnormalities (Grades 3-4) Reported in ≥3% of Subjects Receiving VEKLURY in NIAID ACTT-1

Laboratory Parameter Abnormality^a	VEKLURY 10 Days N=532	Placebo N=516
ALT increased	3%	6%
AST increased	6%	8%
Bilirubin increased	2%	5%
Creatinine clearance decreased ^b	18%	20%
Creatinine increased	15%	16%
eGFR decreased	18%	24%
Glucose increased	12%	13%
Hemoglobin decreased	15%	22%
Lymphocytes decreased	11%	18%
Prothrombin time increased	9%	4%

a. Frequencies are based on treatment-emergent laboratory abnormalities. Graded per Division of AIDS (DAIDS) Table for Grading the Severity of Adult and Pediatric Adverse Events, Version 2.1 dated July 2017.

b. Based on the Cockcroft-Gault formula.

Table 9 Laboratory Abnormalities (Grades 3-4) Reported in ≥3% of Subjects Receiving VEKLURY in Trial 5773

Laboratory Parameter Abnormality ^a	VEKLURY 5 Days N=200	VEKLURY 10 Days N=197
ALT increased	6%	8%
AST increased	7%	6%
Creatinine clearance decreased ^b	10%	19%
Creatinine increased	5%	15%
Glucose increased	11%	8%
Hemoglobin decreased	6%	8%

a. Frequencies are based on treatment-emergent laboratory abnormalities. Graded per Division of AIDS (DAIDS) Table for Grading the Severity of Adult and Pediatric Adverse Events, Version 2.1 dated July 2017.

b. Based on the Cockcroft-Gault formula.

Table 10 Laboratory Abnormalities (Grades 3-4) Reported in ≥3% of Subjects Receiving VEKLURY in Trial 5774

Laboratory Parameter Abnormality ^a	VEKLURY 5 Days N=191	VEKLURY 10 Days N=193	SOC N=200
ALT increased	2%	3%	8%
Creatinine clearance decreased ^b	2%	5%	8%
Glucose increased	4%	3%	2%
Hemoglobin decreased	3%	1%	6%

SOC=Standard of care.

a. Frequencies are based on treatment-emergent laboratory abnormalities. Graded per Division of AIDS (DAIDS) Table for Grading the Severity of Adult and Pediatric Adverse Events, Version 2.1 dated July 2017.

b. Based on the Cockcroft-Gault formula.

7 DRUG INTERACTIONS

Due to potential antagonism based on data from cell culture experiments, concomitant use of VEKLURY with chloroquine phosphate or hydroxychloroquine sulfate is not recommended [see *Warnings and Precautions (5.3) and Microbiology (12.4)*].

Drug-drug interaction trials of VEKLURY and other concomitant medications have not been conducted in humans. Remdesivir and its metabolites are in vitro substrates and/or inhibitors of certain drug metabolizing enzymes and transporters. The clinical relevance of these in vitro assessments has not been established [see *Clinical Pharmacology (12.3)*].

8 USE IN SPECIFIC POPULATIONS

8.1 Pregnancy

Risk Summary

Available data from published case reports and compassionate use of remdesivir in pregnant women are insufficient to evaluate for a drug-associated risk of major birth defects, miscarriage, or adverse maternal or fetal outcomes. In nonclinical reproductive toxicity studies, remdesivir demonstrated no adverse effect on embryo-fetal development when administered to pregnant animals at systemic exposures (AUC) of the predominant circulating metabolite of remdesivir (GS-441524) that were 4 times (rats and rabbits) the exposure in humans at the recommended human dose (RHD) (*see Data*).

The estimated background risk of major birth defects and miscarriage for the indicated population is unknown. All pregnancies have a background risk of birth defect, loss, or other adverse outcomes. In the U.S. general population, the estimated background risk of major birth defects and miscarriage in clinically recognized pregnancies is 2 to 4% and 15 to 20%, respectively.

Clinical Considerations

Disease-associated maternal and/or embryo-fetal risk

Pregnant women hospitalized with COVID-19 are at risk for serious morbidity and mortality.

Data

Animal Data

Remdesivir was administered via intravenous injection to pregnant rats and rabbits (up to 20 mg/kg/day) on Gestation Days 6 through 17, and 7 through 20, respectively, and also to rats from Gestation Day 6 to Lactation/Post-partum Day 20. No adverse effects on embryo-fetal (rats and rabbits) or pre/postnatal (rats) development were observed in rats and rabbits at nontoxic doses in pregnant animals. During organogenesis, exposures to the predominant circulating metabolite (GS-441524) were 4 times higher (rats and rabbits) than the exposure in humans at the RHD. In a pre/postnatal development study, exposures to the predominant circulating metabolite of remdesivir (GS-441524) were similar to the human exposures at the RHD.

8.2 Lactation

Risk Summary

There are no available data on the presence of remdesivir in human milk, the effects on the breastfed infant, or the effects on milk production. In animal studies, remdesivir and metabolites have been detected in the nursing pups of mothers given remdesivir, likely due to the presence of remdesivir in milk (*see Data*). The developmental and health benefits of breastfeeding should be considered along with the mother's clinical need for VEKLURY and any potential adverse effects on the breastfed child from VEKLURY or from the underlying maternal condition. Breastfeeding individuals with COVID-19 should follow practices according to clinical guidelines to avoid exposing the infant to COVID-19.

Data

Animal Data

Remdesivir and its metabolites were detected in the plasma of nursing rat pups, likely due to the presence of remdesivir and/or its metabolites in milk, following daily intravenous administration of remdesivir to pregnant rats from Gestation Day 6 to Lactation Day 20. Exposures in nursing pups were approximately 1% that of maternal exposure on Lactation Day 10.

8.4 Pediatric Use

The safety and effectiveness of VEKLURY for the treatment of COVID-19 have been established in pediatric patients 12 years and older and weighing at least 40 kg. Use in this age group is based on extrapolation of pediatric efficacy from adequate and well-controlled studies in adults [see *Clinical Pharmacology (12.3) and Clinical Studies (14)*].

Clinical trials of VEKLURY included 30 adult subjects weighing 40-50 kg. The safety in this weight group was comparable to adult subjects weighing greater than 50 kg. Thirty-nine pediatric patients 12 years and older and weighing at least 40 kg received VEKLURY in a compassionate use program; the available clinical data from these patients are limited.

All pediatric patients 12 years of age and older and weighing at least 40 kg must have eGFR determined before starting VEKLURY and while receiving VEKLURY as clinically appropriate [see *Dosage and Administration (2.1, 2.3)*].

The safety and effectiveness of VEKLURY have not been established in pediatric patients younger than 12 years of age or weighing less than 40 kg.

8.5 Geriatric Use

Reported clinical experience has not identified differences in responses between the elderly and younger patients [see *Clinical Studies (14)*]. No dosage adjustment is required in patients over the age of 65 years. In general, appropriate caution should be exercised in the administration of VEKLURY and monitoring of elderly patients, reflecting the greater frequency of decreased hepatic, renal, or cardiac function, and of concomitant disease or other drug therapy.

8.6 Renal Impairment

The pharmacokinetics of VEKLURY have not been evaluated in patients with renal impairment. Patients with eGFR greater than or equal to 30 mL per minute have received VEKLURY for treatment of COVID-19 with no dose adjustment of VEKLURY [see *Clinical Studies (14)*].

All patients must have an eGFR determined before starting VEKLURY and while receiving VEKLURY as clinically appropriate. Because the excipient betadex sulfobutyl ether sodium is renally cleared and accumulates in patients with decreased renal function, administration of drugs formulated with betadex sulfobutyl ether sodium (such as VEKLURY) is not recommended in patients with eGFR less than 30 mL per minute [see *Dosage and Administration (2.1, 2.3)*].

8.7 Hepatic Impairment

The pharmacokinetics of VEKLURY have not been evaluated in patients with hepatic impairment.

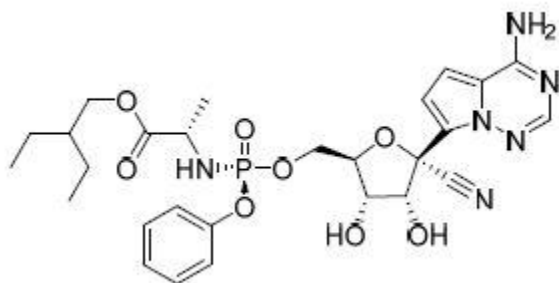
Perform hepatic laboratory testing in all patients before starting VEKLURY and while receiving VEKLURY as clinically appropriate [see *Dosage and Administration (2.1)* and *Warnings and Precautions (5.2)*].

10 OVERDOSAGE

There is no human experience of acute overdose with VEKLURY. Treatment of overdose with VEKLURY should consist of general supportive measures including monitoring of vital signs and observation of the clinical status of the patient. There is no specific antidote for overdose with VEKLURY.

11 DESCRIPTION

VEKLURY contains remdesivir, a SARS-CoV-2 nucleotide analog RNA polymerase inhibitor. The chemical name for remdesivir is 2-ethylbutyl *N*-{(S)-[2-C-(4-aminopyrrolo[2,1-f][1,2,4]triazin-7-yl)-2,5-anhydro-d-altronitril-6-O-yl]phenoxyphosphoryl}-L-alaninate. It has a molecular formula of $C_{27}H_{35}N_6O_8P$ and a molecular weight of 602.6 g/mol. Remdesivir has the following structural formula:



VEKLURY for injection contains 100 mg of remdesivir as a sterile, preservative-free lyophilized white to off-white to yellow powder in a single-dose clear glass vial. It requires reconstitution and then further dilution prior to administration by intravenous infusion [see *Dosage and Administration (2.4)*]. The inactive ingredients are 3 g betadex sulfobutyl ether sodium and may include hydrochloric acid and/or sodium hydroxide for pH adjustment.

VEKLURY injection contains 100 mg/20 mL (5 mg/mL) of remdesivir as a sterile, preservative-free, clear, colorless to yellow solution in a single-dose clear glass vial. It requires dilution prior to administration by intravenous infusion [see *Dosage and Administration (2.4)*]. The inactive ingredients are 6 g betadex sulfobutyl ether sodium, Water for Injection, USP, and may include hydrochloric acid and/or sodium hydroxide for pH adjustment.

12 CLINICAL PHARMACOLOGY

12.1 Mechanism of Action

Remdesivir is an antiviral drug with activity against severe acute respiratory syndrome coronavirus 2 (SARS-CoV-2) [see *Microbiology (12.4)*].

12.2 Pharmacodynamics

Remdesivir and metabolites exposure-response relationships and the time course of pharmacodynamics response are unknown.

12.3. Pharmacokinetics

The pharmacokinetic (PK) properties of remdesivir and metabolites are provided in Table 11. The multiple dose PK parameters of remdesivir and metabolites in healthy adults are provided in Table 12.

Table 11 Pharmacokinetic Properties of Remdesivir and Metabolites (GS-441524 and GS-704277)

	Remdesivir	GS-441524	GS-704277
Absorption			
T _{max} (h) ^a	0.67-0.68	1.51-2.00	0.75-0.75
Distribution			
% bound to human plasma proteins	88-93.6 ^b	2	1
Blood-to-plasma ratio	0.68-1.0	1.19	0.56
Elimination			
t _{1/2} (h) ^c	1	27	1.3
Metabolism			
Metabolic pathway(s)	CES1 (80%) Cathepsin A (10%) CYP3A (10%)	Not significantly metabolized	HINT1
Excretion			
Major route of elimination	Metabolism	Glomerular filtration and active tubular secretion	Metabolism
% of dose excreted in urine ^d	10	49	2.9
% of dose excreted in feces ^d	ND	0.5	ND

ND=not detected

- Remdesivir administered as a 30-minute IV infusion (Study GS-US-399-5505); range of median observed on Day 1 and Day 5 or 10.
- Range of protein binding for remdesivir from 2 independent experiments show no evidence of concentration-dependent protein binding for remdesivir.
- Median (Study GS-US-399-4231).
- Mean (Study GS-US-399-4231).

Table 12 Multiple Dose PK Parameters^a of Remdesivir and Metabolites (GS-441524 and GS-704277) Following IV Administration of VEKLURY 100 mg to Healthy Adults

Parameter Mean (CV%)	Remdesivir	GS-441524	GS-704277
C _{max} (nanogram per mL)	2229 (19.2)	145 (19.3)	246 (33.9)
AUC _{tau} (nanogram•h per mL)	1585 (16.6)	2229 (18.4)	462 (31.4)
C _{trough} (nanogram per mL)	ND	69.2 (18.2)	ND

CV=Coefficient of Variation; ND=Not detectable (at 24 hours post-dose)

- Remdesivir administered as a 30-minute IV infusion (Study GS-US-399-5505).

Specific Populations

Pharmacokinetic differences based on sex, race, age, renal function, and hepatic function on the exposures of remdesivir have not been evaluated.

Pediatric Patients

The pharmacokinetics of VEKLURY in pediatric patients have not been evaluated.

Using modeling and simulation, the recommended dosing regimen is expected to result in comparable steady-state plasma exposures of remdesivir and metabolites in patients 12 years of age and older and weighing at least 40 kg as observed in healthy adults [see *Use in Specific Populations (8.4)*].

Drug Interaction Studies

Clinical drug-drug interaction studies have not been performed with VEKLURY.

In vitro, remdesivir is a substrate for drug metabolizing enzyme CYP3A4, and is a substrate for Organic Anion Transporting Polypeptides 1B1 (OATP1B1) and P-glycoprotein (P-gp) transporters. In vitro, remdesivir is an inhibitor of CYP3A4, OATP1B1, OATP1B3, and MATE1. GS-704277 is a substrate for OATP1B1 and OATP1B3. The clinical relevance of these in vitro assessments has not been established.

Remdesivir is not a substrate for CYP1A1, 1A2, 2B6, 2C9, 2C19, or OATP1B3. GS-704277 and GS-441524 are not substrates for CYP1A1, 1A2, 2B6, 2C8, 2C9, 2D6, or 3A5. GS-441524 is also not a

substrate for CYP2C19 or 3A4. GS-704277 and GS-441524 are not substrates for OAT1, OAT3, OCT1, OCT2, MATE1, or MATE2k. GS-441524 is also not a substrate for OATP1B1 or OATP1B3.

12.4 Microbiology

Mechanism of Action

Remdesivir is an inhibitor of the SARS-CoV-2 RNA-dependent RNA polymerase (RdRp), which is essential for viral replication. Remdesivir is an adenosine nucleotide prodrug that distributes into cells where it is metabolized to a nucleoside monophosphate intermediate by carboxylesterase 1 and/or cathepsin A, depending upon the cell type. The nucleoside monophosphate is subsequently phosphorylated by cellular kinases to form the pharmacologically active nucleoside triphosphate metabolite (GS-443902). Remdesivir triphosphate (RDV-TP) acts as an analog of adenosine triphosphate (ATP) and competes with high selectivity (3.65-fold) over the natural ATP substrate for incorporation into nascent RNA chains by the SARS-CoV-2 RNA-dependent RNA polymerase, which results in delayed chain termination (position i+3) during replication of the viral RNA. In a biochemical assay assessing RDV-TP incorporation by the MERS-CoV RdRp complex, RDV-TP inhibited RNA synthesis with an IC_{50} value of 0.032 μ M. RDV-TP can also inhibit viral RNA synthesis following its incorporation into the template viral RNA as a result of read-through by the viral polymerase that may occur at higher nucleotide concentrations. When remdesivir nucleotide is present in the viral RNA template, the efficiency of incorporation of the complementary natural nucleotide is compromised, thereby inhibiting viral RNA synthesis. Remdesivir triphosphate is a weak inhibitor of mammalian DNA and RNA polymerases, including human mitochondrial RNA polymerase.

Antiviral Activity

Remdesivir exhibited cell culture antiviral activity against a clinical isolate of SARS-CoV-2 in primary human airway epithelial (HAE) cells with a 50% effective concentration (EC_{50}) of 9.9 nM after 48 hours of treatment. Remdesivir inhibited the replication of SARS-CoV-2 in the continuous human lung epithelial cell lines Calu-3 and A549-hACE2 with EC_{50} values of 280 nM after 72 hours of treatment and 115 nM after 48 hours of treatment, respectively.

Remdesivir EC_{50} values for SARS-CoV-2 in A549-hACE2 cells were not different when combined with chloroquine phosphate or hydroxychloroquine sulfate at concentrations up to 2.5 μ M. In a separate study, the antiviral activity of remdesivir was antagonized by chloroquine phosphate in a dose-dependent manner when the two drugs were co-incubated at clinically relevant concentrations in HEp-2 cells infected with respiratory syncytial virus (RSV). Higher remdesivir EC_{50} values were observed with increasing concentrations of chloroquine phosphate. Increasing concentrations of chloroquine phosphate or hydroxychloroquine sulfate reduced formation of remdesivir triphosphate in A549-hACE2, HEp-2, and normal human bronchial epithelial cells.

Resistance

No clinical data are available on the development of SARS-CoV-2 resistance to remdesivir. The cell culture development of SARS-CoV-2 resistance to remdesivir has not been assessed to date.

Cell culture resistance profiling of remdesivir using the rodent CoV murine hepatitis virus identified two substitutions (F476L and V553L) in the viral RNA-dependent RNA polymerase at residues conserved across CoVs. The combination of these two substitutions conferred a 5.6-fold reduction in

susceptibility to remdesivir. The mutant viruses showed reduced viral fitness in cell culture, and introduction of the corresponding substitutions (F480L and V557L) into SARS-CoV resulted in 6-fold reduction in susceptibility to remdesivir in cell culture and attenuated SARS-CoV pathogenesis in a mouse model.

13 NONCLINICAL TOXICOLOGY

13.1 Carcinogenesis, Mutagenesis, Impairment of Fertility

Carcinogenesis and Mutagenesis

Given the short-term administration of VEKLURY for the treatment of COVID-19, long-term animal studies to evaluate the carcinogenic potential of remdesivir were not conducted.

Remdesivir was not genotoxic in a battery of assays, including bacterial mutagenicity, chromosome aberration using human peripheral blood lymphocytes, and in vivo rat micronucleus assays.

Impairment of Fertility

Nonclinical toxicity studies in rats demonstrated no adverse effect on male fertility at exposures of the predominant circulating metabolite (GS-441524) approximately 2 times the exposure in humans at the RHD.

Reproductive toxicity, including decreases in corpora lutea, numbers of implantation sites, and viable embryos, was seen when remdesivir was administered by daily intravenous administration at a systemically toxic dose (10 mg/kg) in female rats 14 days prior to mating and during conception; exposures of the predominant circulating metabolite (GS-441524) were 1.3 times the exposure in humans at the RHD.

13.2 Animal Toxicology and/or Pharmacology

Intravenous administration (slow bolus) of remdesivir to male rhesus monkeys at dosage levels of 5, 10, and 20 mg/kg/day for 7 days resulted, at all dose levels, in increased mean urea nitrogen and increased mean creatinine, renal tubular atrophy, and basophilia and casts.

Intravenous administration (slow bolus) of remdesivir to rats at dosage levels of ≥ 3 mg/kg/day for up to 4 weeks resulted in findings indicative of kidney injury and/or dysfunction.

Kidney-related effects in rats and monkeys were observed at exposures of the predominant circulating metabolite (GS-441524) that are lower than the exposure in humans at the RHD.

14 CLINICAL STUDIES

NIAID ACTT-1 Study in Subjects with Mild/Moderate and Severe COVID-19

A randomized, double-blind, placebo-controlled clinical trial (ACTT-1, NCT04280705) of hospitalized adult subjects with confirmed SARS-CoV-2 infection and mild, moderate, or severe COVID-19

compared treatment with VEKLURY for 10 days (n=541) with placebo (n=521). Mild/moderate disease was defined as SpO₂ >94% and respiratory rate <24 breaths/minute without supplemental oxygen; severe disease was defined as an SpO₂ ≤94% on room air, a respiratory rate ≥24 breaths/minute, an oxygen requirement, or a requirement for mechanical ventilation. Subjects had to have at least one of the following to be enrolled in the trial: radiographic infiltrates by imaging, SpO₂ ≤94% on room air, a requirement for supplemental oxygen, or a requirement for mechanical ventilation. Subjects treated with VEKLURY received 200 mg on Day 1 and 100 mg once daily on subsequent days, for 10 days of treatment via intravenous infusion. Treatment with VEKLURY was stopped in subjects who were discharged from the hospital prior to the completion of 10 days of treatment.

At baseline, mean age was 59 years (with 36% of subjects aged 65 or older); 64% of subjects were male, 53% were White, 21% were Black, and 13% were Asian; 24% were Hispanic or Latino; 105 subjects had mild/moderate disease (10% in both treatment groups); 957 subjects had severe disease (90% in both treatment groups). A total of 285 subjects (27%) (n=131 received VEKLURY) were on invasive mechanical ventilation or ECMO. The most common comorbidities were hypertension (51%), obesity (45%), and type 2 diabetes mellitus (31%); the distribution of comorbidities was similar between the two treatment groups.

The primary clinical endpoint was time to recovery within 29 days after randomization. Recovery was defined as discharged from the hospital without limitations on activities, discharged from the hospital with limitations on activities and/or requiring home oxygen, or hospitalized but not requiring supplemental oxygen and no longer requiring ongoing medical care. The median time to recovery was 10 days in the VEKLURY group compared to 15 days in the placebo group (recovery rate ratio 1.29 [95% CI 1.12 to 1.49], p<0.001). Among subjects with mild/moderate disease at enrollment (n=105), the median time to recovery was 5 days in both the VEKLURY and placebo groups (recovery rate ratio 1.22 [95% CI 0.82 to 1.81]). Among subjects with severe disease at enrollment (n=957), the median time to recovery was 11 days in the VEKLURY group compared to 18 days in the placebo group (recovery rate ratio 1.31 [95% CI 1.12 to 1.52]).

A key secondary endpoint was clinical status on Day 15 assessed on an 8-point ordinal scale consisting of the following categories:

1. not hospitalized, no limitations on activities;
2. not hospitalized, limitation on activities and/or requiring home oxygen;
3. hospitalized, not requiring supplemental oxygen - no longer requires ongoing medical care;
4. hospitalized, not requiring supplemental oxygen - requiring ongoing medical care (COVID-19 related or otherwise);
5. hospitalized, requiring supplemental oxygen;
6. hospitalized, on noninvasive ventilation or high-flow oxygen devices;
7. hospitalized, on invasive mechanical ventilation or ECMO; and
8. death.

Overall, the odds of improvement in the ordinal scale were higher in the VEKLURY group at Day 15 when compared to the placebo group (odds ratio 1.54 [95% CI 1.25 to 1.91]).

Overall, 29-day mortality was 11% for the VEKLURY group vs 15% for the placebo group (hazard ratio 0.73 [95% CI 0.52 to 1.03]).

Study GS-US-540-5773 in Subjects with Severe COVID-19

A randomized, open-label multi-center clinical trial (Study 5773, NCT04292899) in adult subjects with confirmed SARS-CoV-2 infection, an SpO₂ of ≤94% on room air, and radiological evidence of pneumonia compared 200 subjects who received VEKLURY for 5 days with 197 subjects who received VEKLURY for 10 days. Treatment with VEKLURY was stopped in subjects who were discharged from the hospital prior to completion of their protocol-defined duration of treatment. Subjects on mechanical ventilation at screening were excluded. All subjects received 200 mg of VEKLURY on Day 1 and 100 mg once daily on subsequent days via intravenous infusion, plus standard of care.

At baseline, the median age of subjects was 61 years (range, 20 to 98 years); 64% were male, 75% were White, 12% were Black, and 12% were Asian; 22% were Hispanic or Latino. More subjects in the 10-day group than the 5-day group required invasive mechanical ventilation or ECMO (5% vs 2%), or high-flow oxygen support (30% vs 25%), at baseline. Median duration of symptoms and hospitalization prior to first dose of VEKLURY were similar across treatment groups.

The primary endpoint was clinical status on Day 14 assessed on a 7-point ordinal scale consisting of the following categories:

1. death;
2. hospitalized, receiving invasive mechanical ventilation or ECMO;
3. hospitalized, receiving noninvasive ventilation or high-flow oxygen devices;
4. hospitalized, requiring low-flow supplemental oxygen;
5. hospitalized, not requiring supplemental oxygen but receiving ongoing medical care (related or not related to COVID-19);
6. hospitalized, requiring neither supplemental oxygen nor ongoing medical care (other than that specified in the protocol for remdesivir administration); and
7. not hospitalized.

Overall, after adjusting for between-group differences at baseline, subjects receiving a 5-day course of VEKLURY had similar clinical status at Day 14 as those receiving a 10-day course (odds ratio for improvement 0.75 [95% CI 0.51 to 1.12]). There were no statistically significant differences in recovery rates or mortality rates in the 5-day and 10-day groups once adjusted for between-group differences at baseline. All-cause mortality at Day 28 was 12% vs 14% in the 5- and 10-day treatment groups, respectively.

Study GS-US-540-5774 in Subjects with Moderate COVID-19

A randomized, open-label multi-center clinical trial (Study 5774, NCT04292730) of hospitalized adult subjects with confirmed SARS-CoV-2 infection, SpO₂ >94% and radiological evidence of pneumonia compared treatment with VEKLURY for 5 days (n=191) and treatment with VEKLURY for 10 days (n=193) with standard of care (n=200). Treatment with VEKLURY was stopped in subjects who were discharged from the hospital prior to completion of their protocol-defined duration of treatment. Subjects treated with VEKLURY received 200 mg on Day 1 and 100 mg once daily on subsequent days via intravenous infusion.

At baseline, the median age of subjects was 57 years (range, 12 to 95 years); 61% were male, 61% were White, 19% were Black, and 19% were Asian; 18% were Hispanic or Latino. Baseline clinical

status, oxygen support status, and median duration of symptoms and hospitalization prior to first dose of VEKLURY were similar across treatment groups.

The primary endpoint was clinical status on Day 11 assessed on a 7-point ordinal scale consisting of the following categories:

1. death;
2. hospitalized, receiving invasive mechanical ventilation or ECMO;
3. hospitalized, receiving noninvasive ventilation or high-flow oxygen devices;
4. hospitalized, requiring low-flow supplemental oxygen;
5. hospitalized, not requiring supplemental oxygen but receiving ongoing medical care (related or not related to COVID-19);
6. hospitalized, requiring neither supplemental oxygen nor ongoing medical care (other than that specified in the protocol for remdesivir administration); and
7. not hospitalized.

Overall, the odds of improvement in the ordinal scale were higher in the 5-day VEKLURY group at Day 11 when compared to those receiving only standard of care (odds ratio 1.65 [95% CI 1.09 to 2.48], $p=0.017$). The odds of improvement in clinical status with the 10-day treatment group when compared to those receiving only standard of care were not statistically significant (odds ratio 1.31 [95% CI 0.88 to 1.95]). All-cause mortality at Day 28 was $\leq 2\%$ in all treatment groups.

16 HOW SUPPLIED/STORAGE AND HANDLING

How Supplied

VEKLURY for injection: 100 mg (NDC 61958-2901-2), is supplied as a single-dose vial containing a sterile, preservative-free white to off-white to yellow lyophilized powder. It requires reconstitution and further dilution prior to administration by intravenous infusion [see *Dosage and Administration (2.4)*]. Discard unused portion. The container closure is not made with natural rubber latex.

VEKLURY injection: 100 mg/20 mL (5 mg/mL) (NDC 61958-2902-2), is supplied as a single-dose vial containing a sterile, preservative-free, clear, colorless to yellow aqueous-based solution. It requires dilution prior to administration by intravenous infusion [see *Dosage and Administration (2.4)*]. Discard unused portion. The container closure is not made with natural rubber latex.

Storage and Handling

Do not reuse or save reconstituted or diluted VEKLURY for future use. These products contain no preservative; therefore, partially used vials should be discarded [see *Dosage and Administration (2.5)*].

VEKLURY for Injection

Store VEKLURY for injection, 100 mg vials below 30°C (below 86°F) until required for use.

After reconstitution, use vials immediately to prepare diluted solution. Dilute the reconstituted solution in 0.9% sodium chloride injection, USP within the same day as administration. The diluted VEKLURY

solution in the infusion bags can be stored up to 24 hours at room temperature (20°C to 25°C [68°F to 77°F]) prior to administration or 48 hours at refrigerated temperature (2°C to 8°C [36°F to 46°F]).

VEKLURY Injection

Store VEKLURY injection vials at refrigerated temperature (2°C to 8°C [36°F to 46°F]) until required for use.

Dilute within the same day as administration. Prior to dilution, equilibrate VEKLURY injection to room temperature (20°C to 25°C [68°F to 77°F]). Sealed vials can be stored up to 12 hours at room temperature prior to dilution. Store VEKLURY injection after dilution in the infusion bags for no more than 24 hours at room temperature (20°C to 25°C [68°F to 77°F]) or 48 hours at refrigerated temperature (2°C to 8°C [36°F to 46°F]).

17 PATIENT COUNSELING INFORMATION

Advise the patient to read the FDA-approved patient labeling (Patient Information).

Hypersensitivity Reactions

Inform patients that hypersensitivity reactions have been seen in patients receiving VEKLURY during and after infusion. Advise patients to inform their healthcare provider if they experience any of the following: changes in heart rate; fever; shortness of breath, wheezing; swelling of the lips, face, or throat; rash; nausea; sweating; or shivering [*see Warnings and Precautions (5.1)*].

Increased Risk of Transaminase Elevations

Inform patients that VEKLURY may increase the risk of hepatic laboratory abnormalities. Advise patients to alert their healthcare provider immediately if they experience any symptoms of liver inflammation [*see Warnings and Precaution (5.2)*].

Drug Interactions

Inform patients that VEKLURY may interact with other drugs. Advise patients to report to their healthcare provider the use of any other prescription or nonprescription medication or herbal products, including chloroquine phosphate or hydroxychloroquine sulfate [*see Warnings and Precautions (5.3), Drug Interactions (7), and Microbiology (12.4)*].

Pregnancy

Inform patients to notify their healthcare provider immediately in the event of a pregnancy [*see Use in Specific Populations (8.1)*].

Lactation

Inform mothers that it is not known whether VEKLURY can pass into their breast milk [*see Use in Specific Populations (8.2)*].

VEKLURY is a trademark of Gilead Sciences, Inc., or its related companies. All other trademarks referenced herein are the property of their respective owners.

© 2021 Gilead Sciences, Inc. All rights reserved

PATIENT INFORMATION

VEKLURY® (VEK-lur-ee)
(remdesivir)
for injection

VEKLURY® (VEK-lur-ee)
(remdesivir)
injection

What is VEKLURY?

VEKLURY is a prescription medicine used to treat adults and children 12 years of age and older and weighing at least 88 pounds (40 kg) with coronavirus disease 2019 (COVID-19) requiring hospitalization.

It is not known if VEKLURY is safe and effective in children under 12 years of age or weighing less than 88 pounds (40 kg).

Do not take VEKLURY if you are allergic to remdesivir or any of the ingredients in VEKLURY. See the end of this leaflet for a complete list of ingredients in VEKLURY.

Before receiving VEKLURY, tell your healthcare provider about all your medical conditions, including if you:

- have kidney problems
- have liver problems
- are pregnant or plan to become pregnant. It is not known if VEKLURY can harm your unborn baby. **Tell your healthcare provider right away if you are pregnant.**
- are breastfeeding or plan to breastfeed. It is not known if VEKLURY can pass into your breast milk. Talk to your healthcare provider about the best way to feed your baby.

Tell your healthcare provider about all the medicines you take, including prescription and over-the-counter medicines, vitamins, and herbal supplements. VEKLURY may interact with other medicines.

Especially tell your healthcare provider if you are taking the medicines chloroquine phosphate or hydroxychloroquine sulfate.

How will I receive VEKLURY?

- VEKLURY is given to you through a vein by intravenous (IV) infusion one time each day for up to 10 days. Your healthcare provider will decide how many doses you need.

What are the possible side effects of VEKLURY?

VEKLURY may cause serious side effects, including:

- **Allergic reactions.** Allergic reactions can happen during or after infusion with VEKLURY. Tell your healthcare provider right away if you get any of the following signs and symptoms of an allergic reaction:
 - changes in your heart rate
 - fever
 - shortness of breath, wheezing
 - swelling of the lips, face, or throat
 - rash
 - nausea
 - sweating
 - shivering
- **Increase in liver enzymes.** Increases in liver enzymes are common in people who have received VEKLURY and may be a sign of liver injury. Your healthcare provider will do blood tests to check your liver enzymes before and during treatment with VEKLURY as needed. Your healthcare provider may stop treatment with VEKLURY if you develop new or worsening liver problems.

The most common side effect of VEKLURY is nausea.

These are not all of the possible side effects of VEKLURY.

Call your doctor for medical advice about side effects. You may report side effects to FDA at 1-800-FDA-1088.

General information about the safe and effective use of VEKLURY.

Medicines are sometimes prescribed for purposes other than those listed in a Patient Information leaflet. You can ask your pharmacist or healthcare provider for information about VEKLURY that is written for healthcare professionals.

What are the ingredients in VEKLURY?

Active ingredient: remdesivir

Inactive ingredients:

VEKLURY for injection: betadex sulfobutyl ether sodium and may include hydrochloric acid and/or sodium hydroxide for pH adjustment.

VEKLURY injection: betadex sulfobutyl ether sodium, Water for Injection, USP, and may include hydrochloric acid and/or sodium hydroxide for pH adjustment.

Manufactured and distributed by: Gilead Sciences, Inc., Foster City, CA 94404

VEKLURY is a trademark of Gilead Sciences, Inc., or its related companies. All other trademarks referenced herein are the property of their respective owners.

© 2021 Gilead Sciences, Inc. All rights reserved.

214787-GS-001

For more information, call 1-800-445-3235 or go to www.VEKLURY.com.

This Patient Information has been approved by the U.S. Food and Drug Administration.

Issued: October/2020